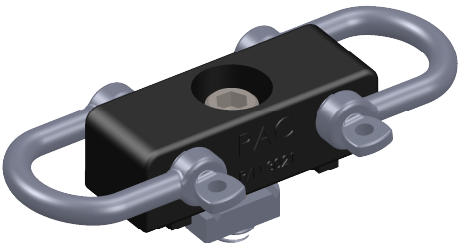
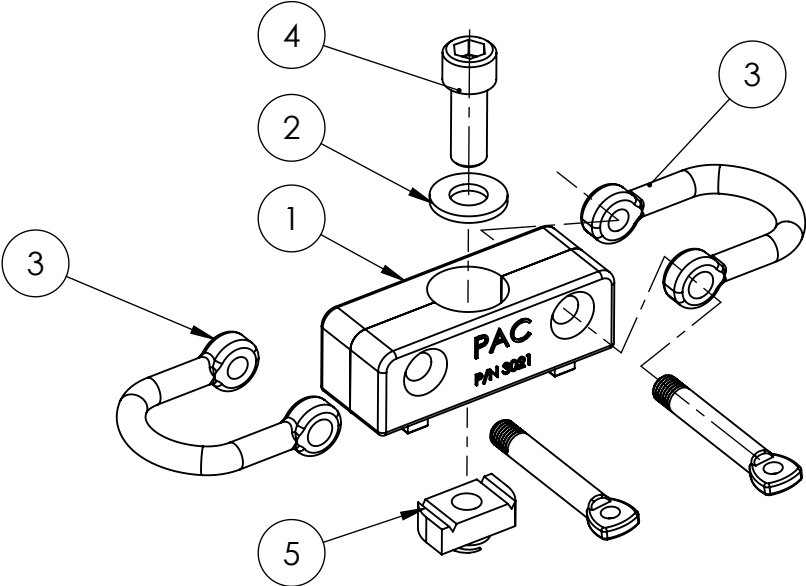


REV	DESCRIPTION	DATE	APPR



5	2083	3/-18 CHANNEL NUT	1
4	2079	3/8-16 X 1" S.H.C.S. S.S.	1
3	3021-401	SHACKLE S.S.	2
2	2081	3/8 SS FLAT WASHER	1
1	3021P	TIE DOWN MOUNT BASE	1
ITEM NO.	PAC P/N	PART NAME	QTY.

NOTES:

MAX. LOAD RATING TO BE 250LBS

COMPATIBLE WITH:
PAC DUAL TRAC
PAC MINI DUAL TRAC
PAC STRUT

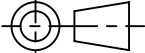
PERFORMANCE
ADVANTAGE
COMPANY



TOLERANCES UNLESS OTHERWISE SPECIFIED

.X= ±.03
.XX= ±.010
.XXX= ±.005
.XXXX= ±0.0005
ANGLES ±0.5 °
FRACTIONAL ±1/64

THIRD ANGLE PROJECTION



COLOR

NAME

DATE

DRAWN BY

APPR. BY

MFG BY

MFG. P/N

ENG APPR.

MATERIAL

ALT. MATERIAL

FINISH

THE INFORMATION CONTAINED IN THIS DRAWING IS THE SOLE PROPERTY OF **PERFORMANCE ADVANTAGE CO.** ANY REPRODUCTION IN PART OR AS A WHOLE WITHOUT THE WRITTEN PERMISSION OF PERFORMANCE ADVANTAGE CO. IS PROHIBITED.

TITLE:

**TIE DOWN MOUNT
DOUBLE SHACKLE**

PART NUMBER

K3021D

REV

SCALE: 1:2

SHEET 1 OF 2